



## Technical rider “Ismene”

Version of 24 Octobre 2009.

Concept: Marianne Pousseur & Enrico Bagnoli

Interpretation : Marianne Pousseur

### 1. Regie

The control table should be placed in the middle of the tribune on the back.  
Please provide a table with 2 lights.

### 2. Set

Pdf documents 2D and 3D plans you can find in attachment 1 & 2.

Khroma provides :

- 1 video beamer
- 3 Martin moving heads
- The necessary material for a pool of 7,60 m X 7,60 m, height 5 cm, filled for 3cm water.
- 8 infrared lights
- 2 paraboles in aluminium
- 1 chair

The theatre provides :

- 1 plan of legs and borders
- 1 light grey or white back curtain (if the back wall is not white, unusable or too much broken)
- 1 sewage pipe (toilet, lavabo, etc.) at maximum 20m from the stage
- 1 water tap strong pressure with water tube
- 2 x 32 A 380 volts near stage.
- **Dry ice** : we use more or less 7 kg of dry ice (carbonic CO<sub>2</sub>) in little pieces, not big blocks for each performance and on the general rehearsal (the building day before the 1<sup>st</sup> performance) .  
Know that it melts really fast so you should get it delivered every day (max every 2 day's if you have a good isolation box.)

### 3. Stage

It's important the stage floor is perfectly horizontal, cause of a pool with water.

We need a black floor (dance carpet) that covers the whole stage and should be installed when we arrive.

It is really necessary the space is heated on minimum 24° Celsius.

Dimensions ideal/ minimal :

**Depth:** 10 m (min 8 m) **Width:** 10 m (min 8 m) **Height:** 8 m (min 5 m)

#### **4. Fly bars**

We need a fly bar (bridge, truss,..) in front between 4 or 5m from the front of the pool, the ideal is 4,5m. On this fly bar we will install the beamer, a profile and our HQI PC 2000W. We need as well 2 fly bars on the back to hang the infrared lights ( see the plan). As well a fly bar for the speakers ( see the plan).

We hang on these fly bars :

8 infrared lights (8x 1 kg)

1 x Fresnel 2 Kw or Juliat 913 HMI Dartagnan ( 1 x 65 kg )

1 x video beamer

1 x PC HQI 2Kw ( 1 x 15 kg ) with ballast 8 kg.

#### **5. Black curtains**

Normally, when the stage is clean enough , we don't use any curtains. This in case the back & side wall's are nice and when the acoustics is good. Otherwise we will use a general plan streight with back drop & borders.

#### **6. Extra power supply**

We need 3 points in the proscenium for the moving heads 220 V Total minimum 2000 W All our equipment is provided with Shuko if your power points are different please foresee changers in both wise.

We also bring DMX XLR3 cables to link our moving heads.

The theatre provides DMX XLR5 cables.

The theatre provides dimmers on DMX , 24 channels minimum.

Included all cabling, splitters, ...

#### **7. Light**

The theatre provides:

Item	Quantity	Filtres
Profile 1KW (Zoom 30-45° 1000) Juliat 613	8	2x 200 Lee 1x 106 Lee
Profile 2KW (DS204 Zoom 30-45° 2000) ou Juliat 713	2	Open
PC 1KW Front (Greeting light)	4	Open
Fresnel 2KW Back (Contra light) Or Juliat 913 HMI Dartagnan	1	Open
P.C. 2KW Back (Contra light)	1	Open
All cabling and connectors	x	
Shuko power points	4	
Quartz 1000 w	4	

The company provides :

Spots	Quantity	
Martin Mac 250 type Automated	1	
Martin Mac 300 type Fresnel	1	
Martin Mac 500 type Automated	1	
PC 2KW HQI Front	1	
Martin Proscenium DMX computer	1	Light Desk

## **8. Sound**

### **SPEAKERS**

#### **Left / Center / right F.O.H.:**

5 speakers - with adapted cross-over and amplifiers (*type Meyer top UPA or d&b f 1220 or MTD-112 or NEXO PS15*) 3 sends: L/ R. Rigged in grid, Center on the floor (2 in option for larger venues or to solve specific acoustic problems)

#### **Frontfill :**

4 speakers - with adapted cross-overs and amplifiers (*type d&b E3 or NEXO PS8 or MARTIN WT15*) send: stereo. On the floor . (we bring with us)

#### **Effect:**

2 speakers - with adapted cross-overs and amplifiers (*type d&b E3 or NEXO PS8*) or similar  
send: stereo.

### **REGIE**

#### **Mixing desk:**

Yamaha O1V96 ver2 (or similar)  
+ adat interface card (we provide)

#### **Dynamics:**

1 stereo 32 bands EQ's on the L/R( Klark teknik, Apex, BSS)

#### **Others:**

1 UHF Wireless beldpack set / with a dpa 4060 microphone ( *with matching batteries / performance*)

Battery Alcaline 9Volt (Duracell or similar) for each performance + general

Diederik De Cock / Soundengineer / [diederik@ratenkabel.be](mailto:diederik@ratenkabel.be) / [www.ratenkabel.be](http://www.ratenkabel.be) / mobile +32 476 33 62 30

## **9. Vidéo**

During the performance there are images projected, we provide a beamer type Sony VPLCX80 with 3500 lumen. The Sony VPLCX80 need to be rigged in the front fly bar as high as possible. If the theatre has a stronger beamer we can use the beamer of the theatre  
We also bring a camera type Sony Evi D-31 with all the necessary cabling.

## **10. Surtitles**

In the theatre were the language is not French we provide a subtitle system.

In this case we bring another beamer with a computer with PowerPoint and a projection screen of 3m x 60cm.

We have already subtitles in English, Dutch, Italian, Polish. We can give a PowerPoint file to translate in any other additional language.

## **11. Dressing rooms**

People	Quantity		Quantity loges
Technicians	2 or 3		1
Actress	1		1

The dressing rooms should be provided with the necessary sanitary, shower, napkins, hot water, mirror with light and drinking water.

During the building day and the performances we should be pleased with snacks, fruit and drinks.

## **12. Schedule**

Arrival time artiste: (to be confirmed).  
Performance time : 75 minutes without break.  
Building time : 9 hour's.  
Building-off time : 4 hour's.

We ask the theatre :

**Unloading : 2 Technicians**  
**Build up : 1 Light technician.**  
**2 Technicians for the set and video.**  
**1 Sound technician .**

**Every day 5 hours before the show : 2 technicians (preparing stage)**  
**During the show : 1 technician.**  
**Building off: 2 technicians for light and set.**

## **13. Fire & dangers**

There will be fire on stage, the fire is generated true burning pasta and is placed in an metal bowl and protected with an aluminium parabola above the water.

## **14. General security**

We suppose the theatre confirms the security rules (ARAB, AREI, VLAREM or/ and local rules). We also suppose there are no other restrictions necessary than the Belgians ones.

## **15. Exceptions**

For certain technical limitations we are open to find other solutions but let us always discuss this in advance !

## **16. Contacts**

### **Will be present in the theatre:**

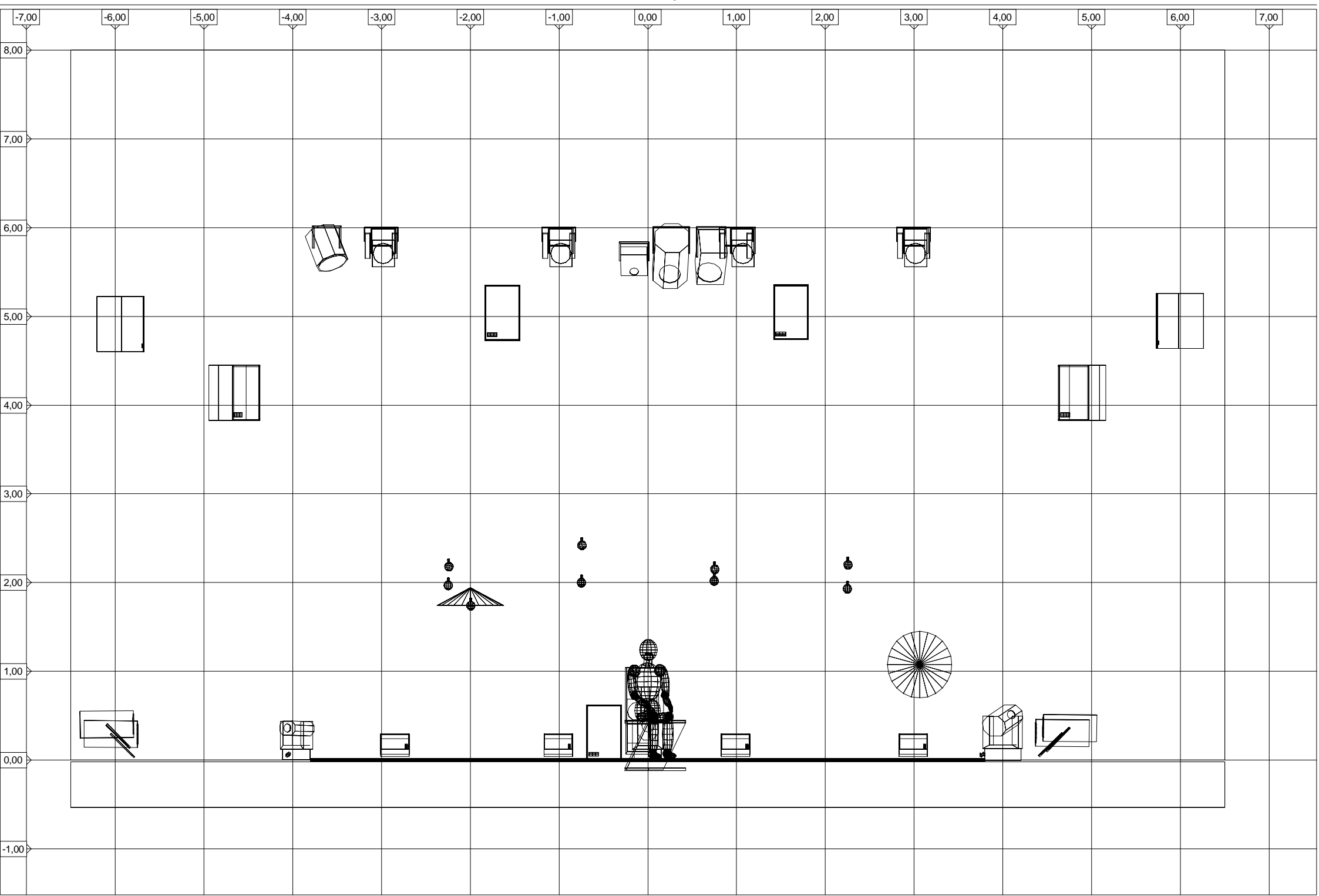
<b>Technical + artists</b>		
Diederik De Cock	+32 476 33 62 30	Sound
Enrico Bagnoli	+32 494 27 31 26	Light & set
Marianne Pousseur	+32 495 56 17 99	Actrice

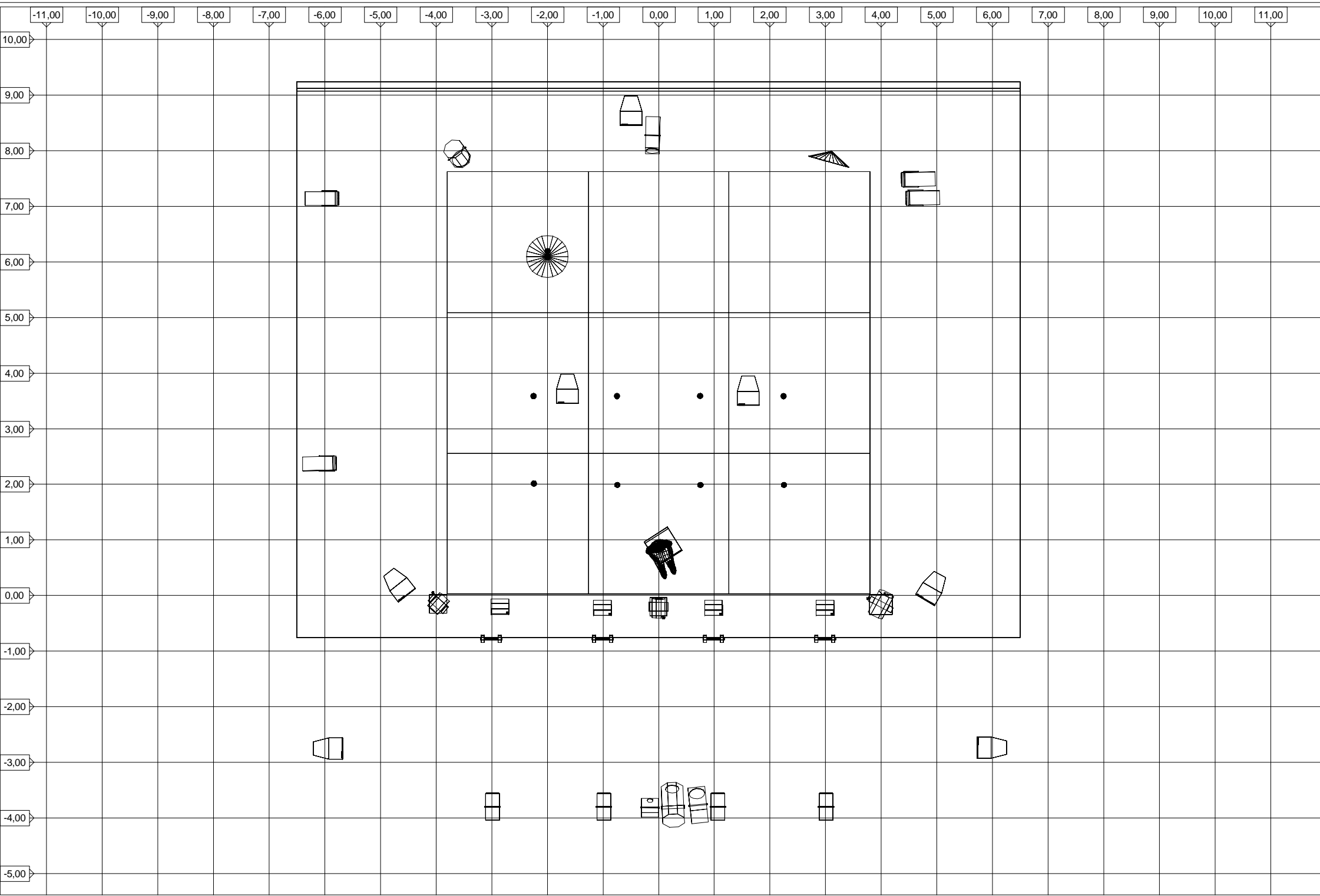
Responsible for the light ,set and video:

Enrico Bagnoli +32 494 27 31 26

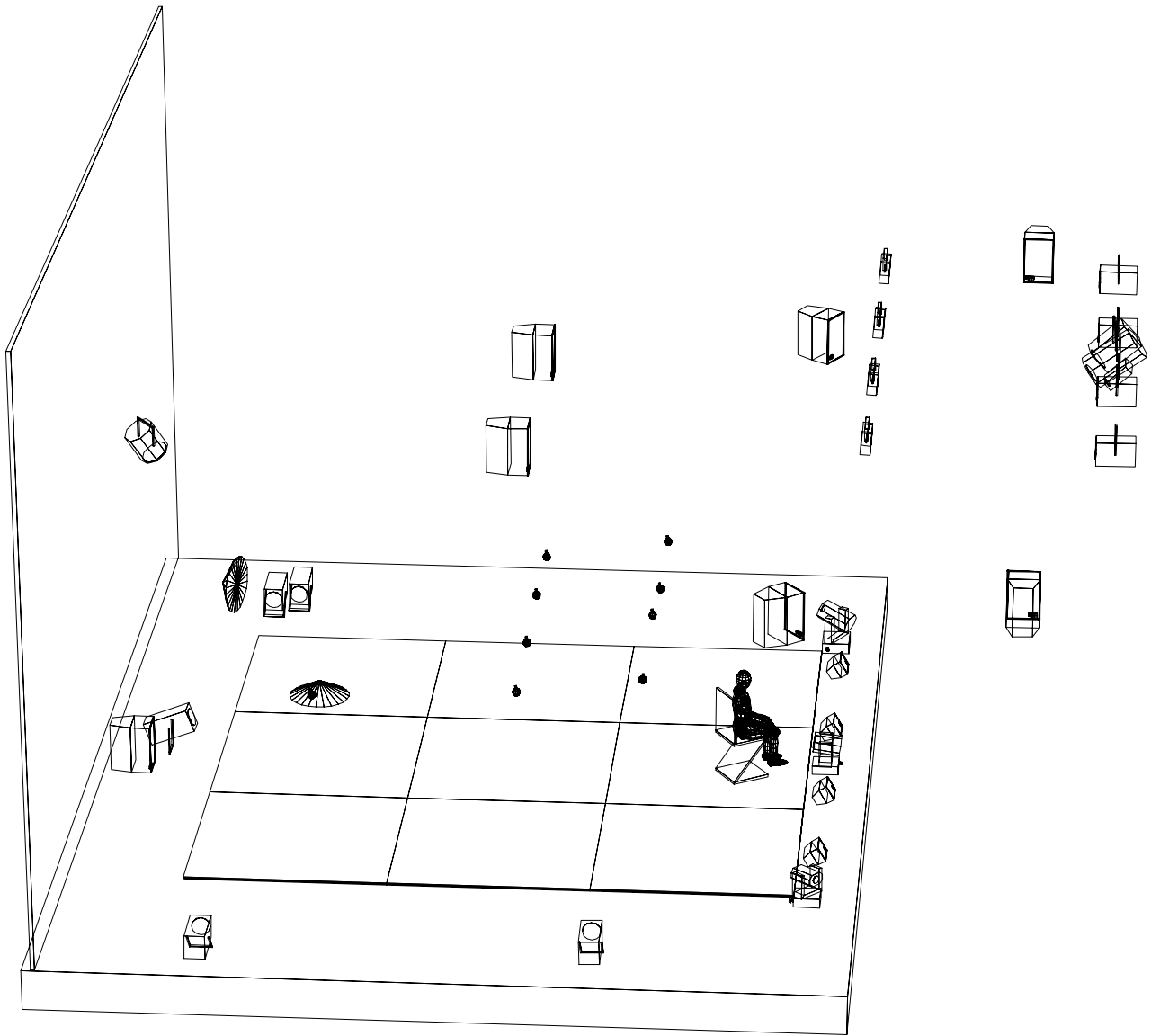
Site : <http://www.khroma.eu>

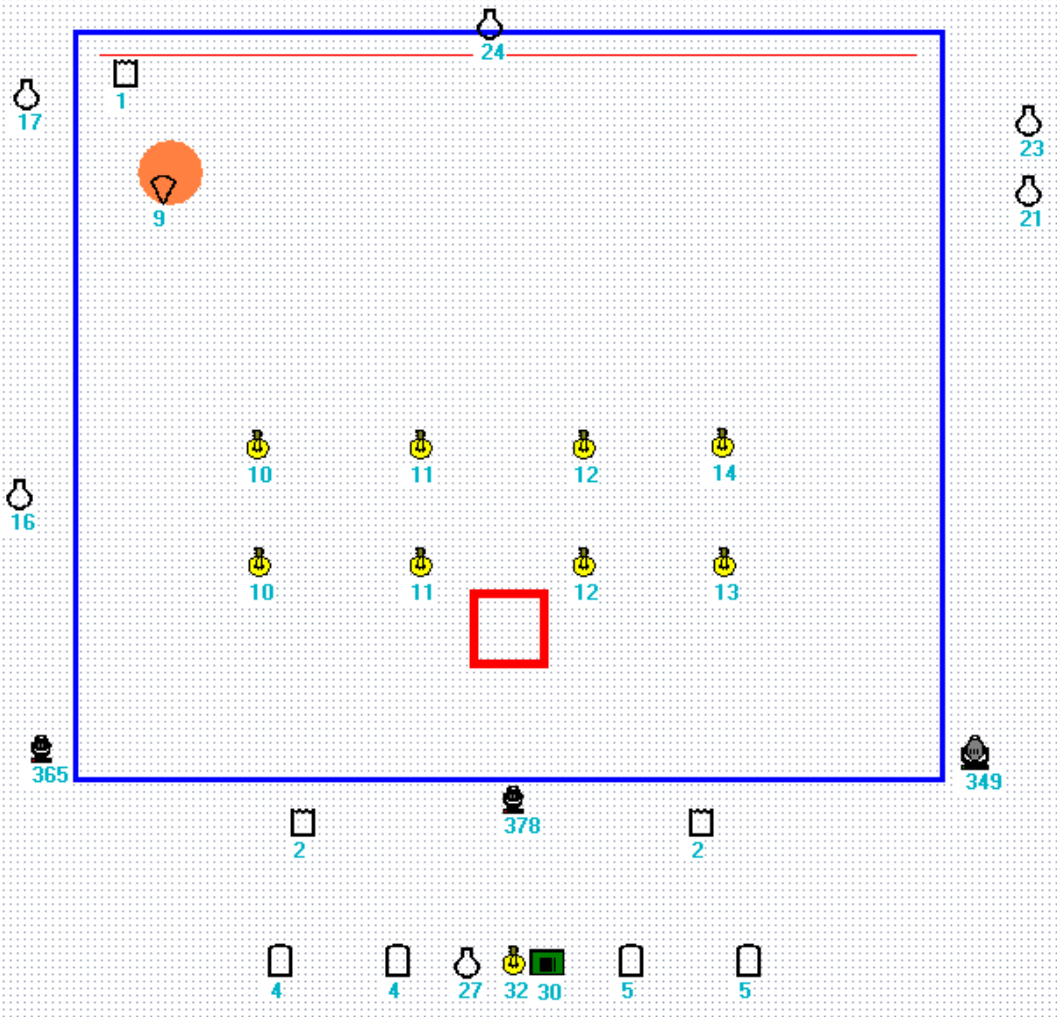
Mail : [info@khroma.eu](mailto:info@khroma.eu)





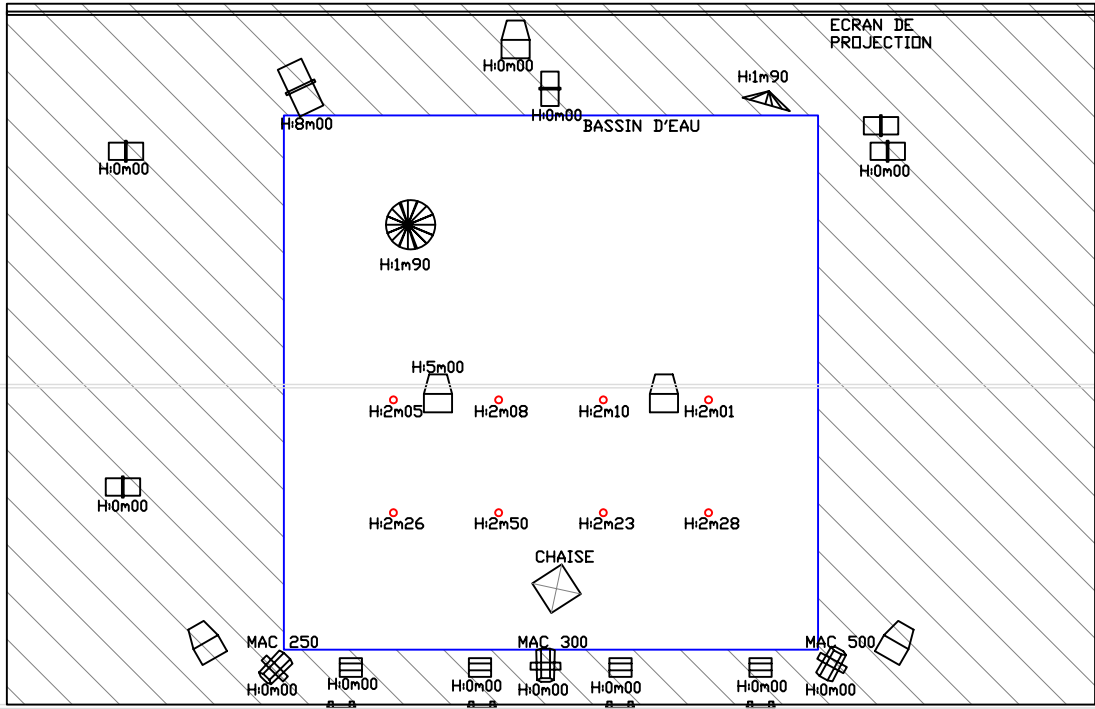






TAPIS DE DANSE NOIR

ECRAN DE PROJECTION



SOUSPERCI  
H:8m00

H:6m00

H:6m00

H:6m00

H:6m00

ISMENE LEGENDE	
	PROJECTEUR VIDEO
	DECOUPE 2K
	DECOUPE 1K
	PARABOLEALUMINIUM
	HAUT PARLEUR
	HAUT PARLEUR
	QUARTZ BLINDER
	PROJECTEUR 2000 PC HQ1
	MOTORISE
	LAMPE DE CIRE